









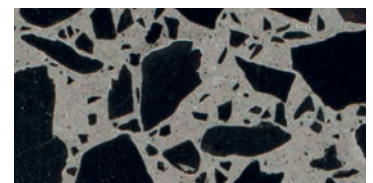


Scheda tecnica / Technical Data Sheet / Technisches Datenblatt
Linea Seminato Veneziano

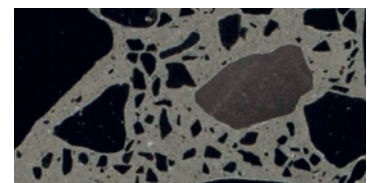
SB 260 Tronchetto

CARATTERISTICHE TECNICHE / TECHNICAL DATA / TECHNISCHE DATEN	
	<p>Resistenza alla flessione Flexural strength Biegezugfestigkeit</p> <p>12 MPa</p>
	<p>Assorbimento d'acqua Water absorption Wasseraufnahme</p> <p>2,54 M%</p>
	<p>Resistenza all'abrasione Resistance to abrasion Schleifverschleiss</p> <p>18,4 cm³/50cm²</p>
	<p>Resistenza alla compressione Resistance to compression Druckfestigkeit</p> <p>≥ 60 MPa</p>
	<p>Carico di rottura Breaking load Bruchlast</p> <p>≥ 3 kN</p>
	<p>Resistenza allo scivolamento Slippage resistance Rutschwiderstand</p> <p>Standard R9 Standard R9 Standard R9</p>
	<p>Resistenza al fuoco Fire resistance Brandverhalten</p> <p>A1_{fl} non infiammabile A1_{fl} fire resistant A1_{fl} nicht brennbar</p>
	<p>Resistenza al gelo Frost resistance Witterungs-Beständig</p> <p>Classe 2/B Class 2/B Klasse 2/B</p>
	<p>Rapporto di prova Test report Prüfbericht</p> <p>AG2015076</p>
	<p>Data di prova Test date Prüftag</p> <p>07/12/2015</p>

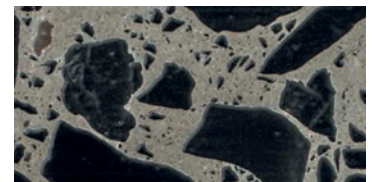
Finiture / Finishing / Bearbeitung



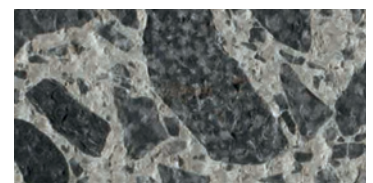
levigato / honed / geschliffen



lucido / polished / poliert



spazzolato / brushed / gebürstet



bocciardato / bush-hammered / gestockt